



# LELUND

**MANUFACTURERS' REPRESENTATIVES**

*Heating • Ventilation • Air Conditioning Products*

## STOCK CATALOG

Phone: 630-627-9886  
[www.lelund.com](http://www.lelund.com)

Lelund Enterprises, Inc.  
1040 N Main St.  
Lombard, IL 60148

 **KRUEGER**  
Grilles, Registers, Diffusers, & VAV Boxes

 **PENNBARRY**<sup>™</sup>  
Exhaust Fans & Gravity Ventilators

**BROAN**<sup>®</sup>  
Bathroom Fans

 **AMERICAN Coolair**   
Exhaust Fans

## Lelund Stock Catalog - Table of Contents

### Krueger - Grilles, Registers, Diffusers, & VAV Boxes

- 2. Supply Ceiling Diffusers
- 5. Slot Diffusers
- 7. Return Diffusers
- 8. Spiral Registers
- 9. Supply Registers
- 10. Return Grilles
- 12. Accessories
- 15. VAV Boxes

### American Coolair - Exhaust Fans

- 16. Downblast Fans
- 18. Upblast Fans
- 19. Inline Fans
- 20. Wall Fans

### PennBarry - Exhaust Fans

- 21. Downblast Fans
- 22. Upblast Fans
- 23. Ceiling Exhaust Fans/Inline Fans
- 24. Gravity Ventilators

### Broan - Exhaust Fans

- 25. Ceiling Exhaust Fans

### Canarm - Exhaust Fans

- 26. Inline Fans
  
- 28. Exhaust Fan Accessories
- 29. Dayus Louvers
- 30. Fire Dampers
- 33. Modine Gas-Fired Unit Heaters
- 34. Line Card

**Krueger PLQ: Plaque Supply Diffuser**

- One-piece, Non-folded, Square Face Plate
  - Plaque Attaches to a One-piece, Stamped Backpan by Hooks
- Fixed 4-Way Discharge Air Pattern
- Round Neck
- Steel Construction
- British White Finish

**Accessories & Options:**

- Neck-mounted Damper (PRN100/PR10)
- Plaster Frame (5HCF23)
- Blow Clip
- Aluminum Construction (5PLQ)
- Narrow-T (PLQ F98)

**Stock Sizes**

<i>Panel Size</i>	<i>Round Neck</i>
<b>24"x24"</b>	<b>6"   8"   10"   12"   14"   15"</b>
<b>12"x12"</b>	<b>6"   8"</b>


**Krueger 1450: Step-Down Supply Diffuser**

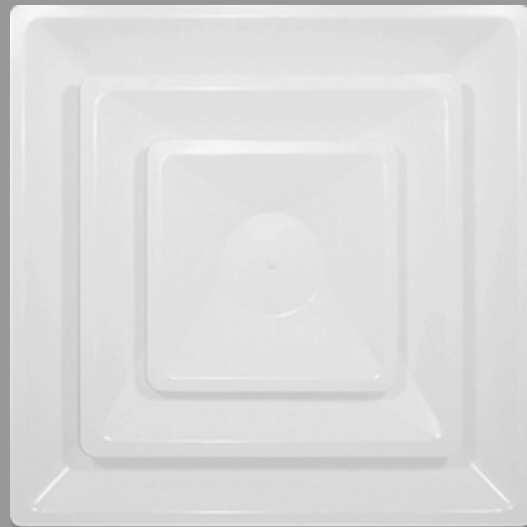
- 3 Cone Design
  - Drops Below the Ceiling Plane
- Mounting: T-Bar Lay-In
- Fixed 4-Way Discharge Air Pattern
- Round Neck
- Steel Construction
- British White Finish

**Accessories & Options:**

- Neck-mounted Damper (PRN100/PR10)
- Plaster Frame (5HCF23)
- Aluminum Construction (51450)
- Adjustable (1450A)

**Stock Sizes**

<i>Panel Size</i>	<i>Round Neck</i>
<b>24"x24"</b>	<b>6"   8"   10"   12"   14"</b>
<b>12"x12"</b>	<b>6"   8"</b>



**Krueger SH: Louvered Supply Diffuser**

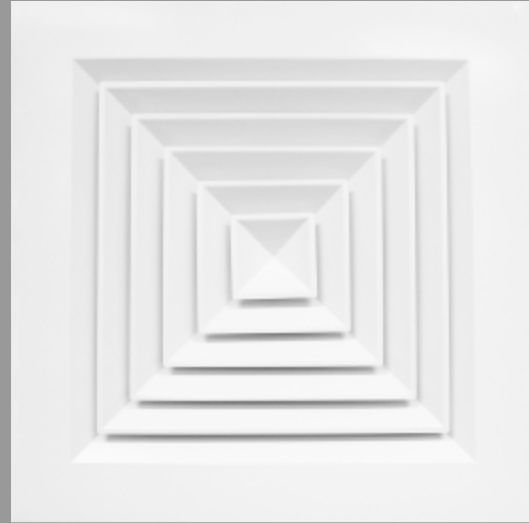
- Flush Louvered Face Diffuser
  - Removable Core
- Mounting: T-Bar Lay-In / Surface Mount
- 4-Way Horizontal Discharge Pattern
- Square Neck
- Steel Construction
- British White Finish

**Accessories & Options:**

- Neck-mounted Damper (OBDFFA)
- Plaster Frame (5HCF23)
- Round Adapters (SRT)
- 1-Way/2-Way/3-Way Cores (SHC)

**Stock Sizes**

<i>Panel Size</i>	<i>Square Neck</i>
<b>24"x24"</b>	<b>9"x9"   12"x12" 15"x15"   18"x18"</b>
<b>12"x12"</b>	<b>9"x9"</b>
<b>Surface Mount</b>	<b>9"x9"   12"x12"   15"x15"</b>


**Krueger 6600: Perforated Supply Diffuser**

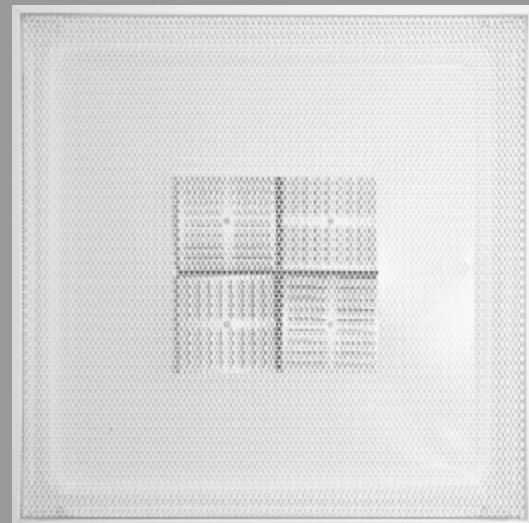
- Modular Pattern Deflectors
  - Mounted on Back of Face
- Mounting: T-Bar Lay-In
- 4-Way Discharge Air Pattern
  - Adjustable for 1, 2, and 3-way
- Hinged, Removable Face
  - 51% Perforated Open Area
- Round Neck
- Steel Face and Steel Backpan Construction
- British White Finish

**Accessories & Options:**

- Neck-mounted Damper (PRN100/PR10)
- Plaster Frame (5HCF23)

**Stock Sizes**

<i>Panel Size</i>	<i>Round Neck</i>
<b>24"x24"</b>	<b>6"   8"   10"   12"   14"</b>
<b>12"x12"</b>	<b>6"</b>



**Krueger RM1: Round Supply Diffuser**

- 3 Cone Design
- Mounting: Surface Mount
- 360° Discharge Air Pattern
- 2 Position Adjustments
- Round Neck
- Steel Construction
- British White Finish

**Accessories & Options:**

- Neck-mounted Damper (PRN100/PR10)

**Stock Sizes**

<i>Panel Size</i>	<i>Round Neck</i>
<b>Surface Mount</b>	<b>6"   8"   10"   12"   14"</b>


**Krueger VPQ4: VAV Diffuser**

- One-piece, Non-folded, Square Face Plate
  - Plaque Attaches to a One-piece, Stamped Backpan by Hooks
- Fixed 4-Way Discharge Air Pattern
- Thermal Wax Control & Cooling/Heating Change-Over
- Round Neck
- Steel Construction
- British White Finish

**Accessories & Options:**

- Plaster Frame (5HCF23)

**Stock Sizes**

<i>Panel Size</i>	<i>Round Neck</i>
<b>24"x24"</b>	<b>6"   8"   10"   12"</b>



**Krueger PTBS: Linear Slot Diffuser**

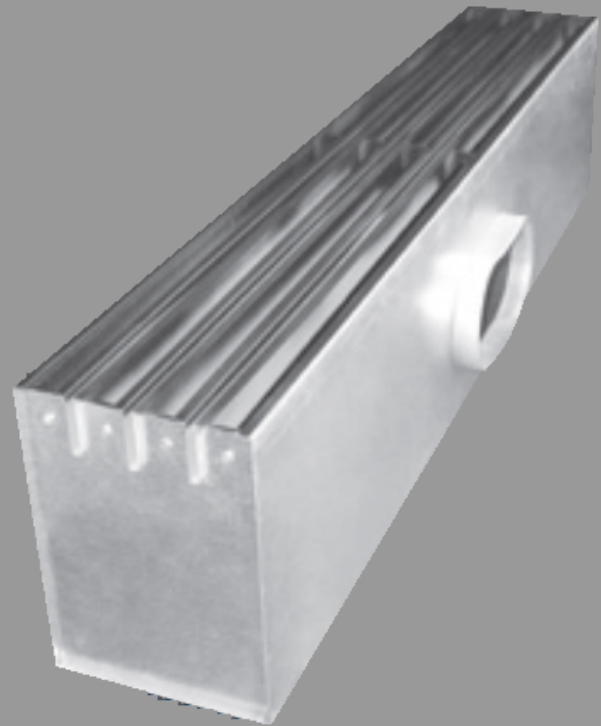
- Steel Construction with Gasketed Adjustable Aluminum Blade
- Integral Insulated Plenum for Lay-in T-bar Ceiling Systems
- Oval Inlet Collar
- 2 Slots with 1" Slot Width
- 24" & 48" Length Units
- Center T-Bar
- Black Face and Deflectors (White Tee)

**Accessories & Options:**

- Plaster Frame (HCFPTBS)
- Center Notch (CN)

**Stock Sizes**

<i>Length</i>	<i>Oval Inlet</i>
<b>2' Long</b>	<b>6"   8"   10"</b>
<b>4' Long</b>	<b>6"   8"   10"   12"</b>



**Krueger 1900: Linear Slot Diffuser**

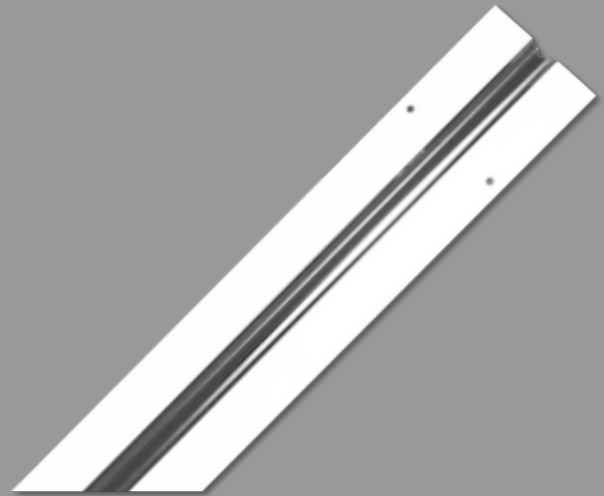
- Extruded Aluminum Construction
- Adjustable, Removable Blades
- 2 Slots with 1" Slot Width
- 48" Length Units
- End Caps
- Concealed Fastening
- British White Finish

**Accessories & Options:**

- Insulated Plenum with Oval Inlet Collar

**Stock Sizes**

<i>Length</i>
<b>4' Long</b>


**Krueger DFL: Linear Slot Diffuser**

- Extruded Aluminum Construction
- Integral Pattern Controllers
- 2 Slots with 1" Slot Width
- 48" Length Units
- End Caps
- Concealed Fastening
- British White Finish

**Accessories & Options:**

- Insulated Plenum with Oval Inlet Collar

**Stock Sizes**

<i>Length</i>
<b>4' Long</b>



**Krueger S80H: Fixed Blade Return**

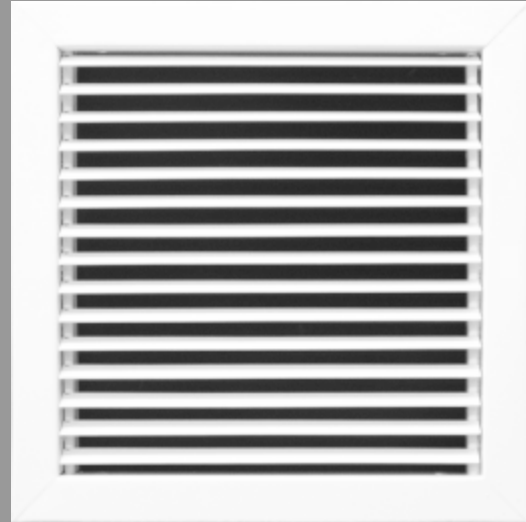
- Fixed Blade Return Grille
  - 3/4" Spacing with 35° Deflection
  - Horizontal Front Blades
- Mounting: T-Bar Lay-In
- Rectangular Neck
- Steel Construction
- British White Finish

**Accessories & Options:**

- Neck-mounted Damper (OBD)
- Plaster Frame (5HCF23)
- Round Adapters (SRT)
- Aluminum Construction (S580H)

**Stock Sizes**

<i>Panel Size</i>	<i>Rectangular Neck</i>
<b>12"x12"</b>	<b>10"x10"</b>
<b>24"x12"</b>	<b>22"x10"</b>
<b>24"x24"</b>	<b>22"x22"</b>
<b>48"x24"</b>	<b>46"x22"</b>



**Krueger EGC5: Eggcrate Return**

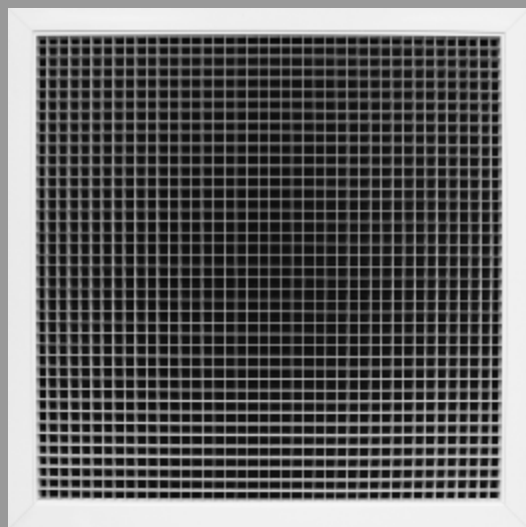
- 1/2"x1/2"x1/2" Eggcrate Grid
- Mounting: T-Bar Lay-In
- Rectangular Neck
- Aluminum Construction
- British White Finish

**Accessories & Options:**

- Neck-mounted Damper (OBD)
- Plaster Frame (5HCF23)
- Round Adapters (SRT)

**Stock Sizes**

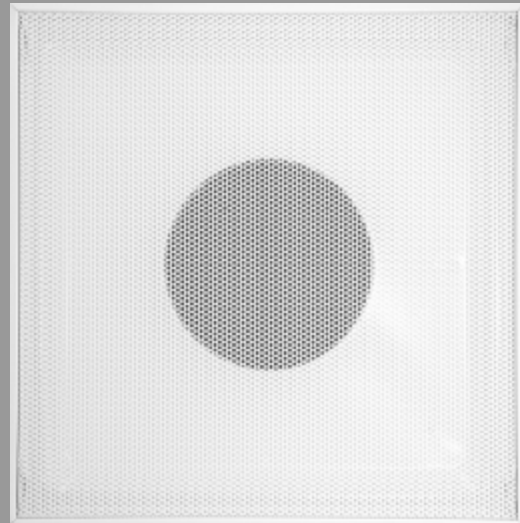
<i>Panel Size</i>	<i>Rectangular Neck</i>
<b>12"x12"</b>	<b>10"x10"</b>
<b>24"x12"</b>	<b>22"x10"</b>
<b>24"x24"</b>	<b>22"x22"</b>
<b>48"x24"</b>	<b>46"x22"</b>





**Krueger 6490/6690: Perforated Return**

- Hinged, Removable Face
    - 51% Perforated Open Area
  - Mounting: T-Bar Lay-In
  - Round/Rectangular Neck
  - Steel Face and Steel Backpan Construction
  - British White Finish
- Accessories & Options:**
- Neck-mounted Damper (PRN100/PR10/OBD)
  - Plaster Frame (5HCF23)



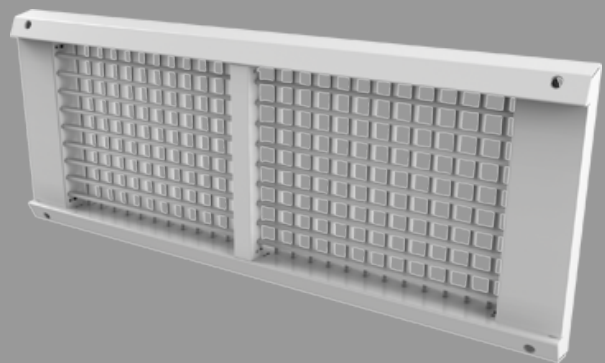
**Stock Sizes**

Panel Size	Round Neck
24"x24"	6"   8"   10"   12"   14"   16" (6690) 22"x22" (6490)
24"x12"	22"x10" (6490)
12"x12"	6 "(6690) 10"x10" (6490)

**Spiral Supply Registers**

**Krueger 5DMGDU: Universal-Mount Double-Deflection Spiral Register**

- Double-Deflection Supply Registers
  - 3/4" Blade Spacing
  - Adjustable Vertical Front Blades
- Mounting: Spiral Duct Mount
- Air Scoop Damper
- Aluminum Construction
  - Foam Gasket
- Mill finish



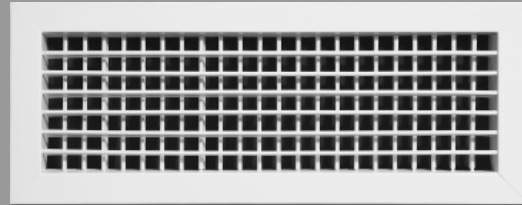
**Stock Sizes (Width x Height) - CFM shown is maximum for 35 NC sound level**

Width	Height							
	3" (6" - 36" Duct)		4" (10" - 36" Duct)		6" (12" - 36" Duct)		8" (24" - 36" Duct)	
10"	10"x3"	145 CFM						
14"			14"x4"	275 CFM	14"x6"	420 CFM		
18"			18"x4"	345 CFM	18"x6"	525 CFM	18"x8"	695 CFM
24"			24"x4"	450 CFM	24"x6"	680 CFM		

**Note: Other sizes also available. Please call to ask us about availability.**

### Krueger 880VOBD: Double-Deflection Supply Register

- Double-Deflection Supply Registers
  - 3/4" Blade Spacing
  - Adjustable Vertical Front Blades
- Mounting: Surface Mount
- Opposed Blade Damper
- Steel Construction
- British White Finish



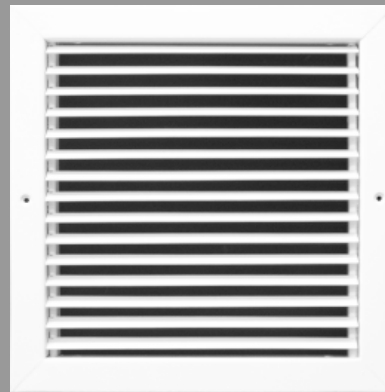
**Stock Sizes (Width x Height) - CFM shown is maximum for 35 NC sound level**

		Height							
Width	4"		6"		8"		10"		
6"			6"x6"	220 CFM					
8"	8"x4"	195 CFM	8"x6"	295 CFM	8"x8"	390 CFM			
10"	10"x4"	240 CFM	10"x6"	360 CFM	10"x8"	480 CFM	10"x10"	590 CFM	
12"	12"x4"	285 CFM	12"x6"	430 CFM	12"x8"	570 CFM	12"x10"	700 CFM	
14"			14"x6"	495 CFM	14"x8"	655 CFM	14"x10"	805 CFM	
16"			16"x6"	560 CFM	16"x8"	740 CFM	16"x10"	910 CFM	
18"			18"x6"	620 CFM	18"x8"	820 CFM	18"x10"	1015 CFM	
20"			20"x6"	685 CFM	20"x8"	900 CFM	20"x10"	1115 CFM	
22"			22"x6"	745 CFM	22"x8"	985 CFM	22"x10"	1215 CFM	
24"			24"x6"	805 CFM	24"x8"	1060 CFM	24"x10"	1310 CFM	
30"			30"x6"	980 CFM	30"x8"	1295 CFM			
36"			36"x6"	1150 CFM	36"x8"	1520 CFM	36"x10"	1875 CFM	
		Height							
Width	12"		14"		16"		18"		
12"	12"x12"	830 CFM							
14"	14"x12"	955 CFM	14"x14"	1100 CFM					
16"	16"x12"	1080 CFM			16"x16"	1400 CFM			
18"	18"x12"	1200 CFM					18"x18"	1735 CFM	
20"					20"x16"	1715 CFM			
22"					22"x16"	1865 CFM			
24"	24"x12"	1550 CFM			24"x16"	2015 CFM	24"x18"	2240 CFM	
30"	30"x12"	1890 CFM					30"x18"	2730 CFM	
36"	36"x12"	2220 CFM							
		Height							
Width	20"		22"		24"				
20"	20"x20"	2095 CFM							
22"			22"x22"	2485 CFM					
24"					24"x24"	2900 CFM			

**Note: Other sizes also available. Please call to ask us about availability.**

**Krueger S80H: Fixed Blade Return Grille**

- Fixed Blade Return Grille
  - 3/4" Spacing with 35° Deflection
  - Horizontal Front Blades
- Mounting: Surface Mount
- Rectangular Neck
- Steel Construction
- British White Finish



**Stock Sizes (Width x Height) - CFM shown is maximum for 35 NC sound level**

		Height							
Width	4"		6"		8"		10"		
6"			6"x6"	210 CFM					
8"	8"x4"	185 CFM	8"x6"	275 CFM	8"x8"	355 CFM			
10"	10"x4"	225 CFM	10"x6"	335 CFM	10"x8"	435 CFM	10"x10"	530 CFM	
12"	12"x4"	265 CFM	12"x6"	390 CFM	12"x8"	510 CFM	12"x10"	620 CFM	
14"			14"x6"	450 CFM	14"x8"	580 CFM	14"x10"	705 CFM	
16"			16"x6"	500 CFM	16"x8"	650 CFM	16"x10"	790 CFM	
18"			18"x6"	555 CFM	18"x8"	720 CFM	18"x10"	875 CFM	
20"			20"x6"	605 CFM	20"x8"	785 CFM	20"x10"	955 CFM	
22"			22"x6"	655 CFM	22"x8"	850 CFM	22"x10"	1035 CFM	
24"			24"x6"	705 CFM	24"x8"	915 CFM	24"x10"	1110 CFM	
30"			30"x6"	850 CFM	30"x8"	1100 CFM	30"x10"	1335 CFM	
36"			36"x6"	985 CFM	36"x8"	1275 CFM	36"x10"	1555 CFM	
		Height							
Width	12"		14"		16"		18"		
12"	12"x12"	735 CFM							
14"	14"x12"	825 CFM	14"x14"	945 CFM					
16"	16"x12"	925 CFM			16"x16"	1185 CFM			
18"	18"x12"	1025 CFM					18"x18"	1445 CFM	
20"	20"x12"	1120 CFM							
22"	22"x12"	1210 CFM							
24"	24"x12"	1300 CFM	24"x14"	1485 CFM	24"x16"	1660 CFM	24"x18"	1835 CFM	
30"	30"x12"	1565 CFM					30"x18"	2205 CFM	
36"	36"x12"	1820 CFM			36"x16"	2320 CFM	36"x18"	2565 CFM	
48"	48"x12"	2300 CFM							

**See next page for continuation**

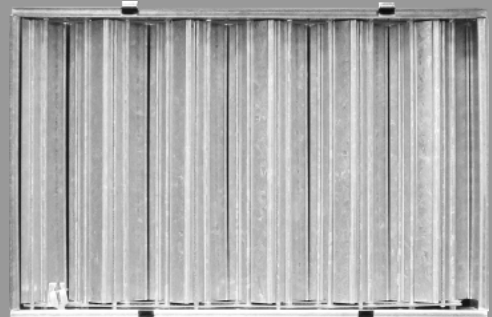
**Note: Other sizes also available. Please call to ask us about availability.**

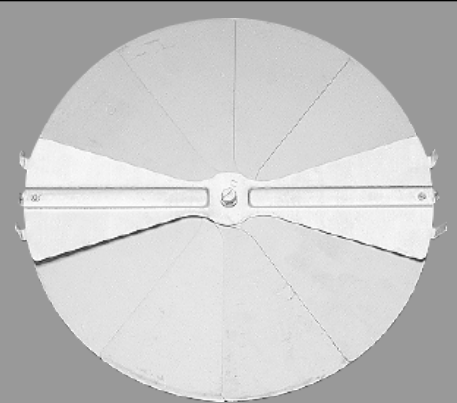


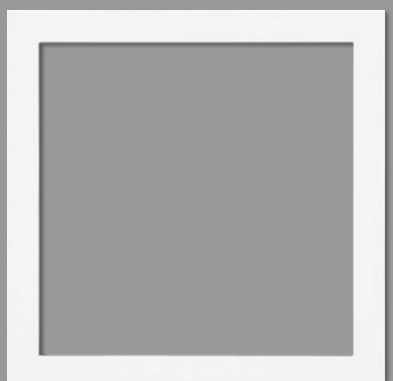
## Return Grilles

<b>Krueger S80H: Fixed Blade Return Grille</b>								
<b>Stock Sizes (Width x Height) - CFM shown is maximum for 35 NC sound level</b>								
	<b>Height</b>							
<b>Width</b>	<b>20"</b>		<b>22"</b>		<b>24"</b>		<b>26"</b>	
<b>20"</b>	<b>20"x20"</b>	1720 CFM						
<b>22"</b>			<b>22"x22"</b>	2020 CFM				
<b>24"</b>	<b>24"x20"</b>	2005 CFM			<b>24"x24"</b>	2330 CFM		
<b>26"</b>							<b>26"x26"</b>	2660 CFM
<b>30"</b>					<b>30"x24"</b>	2805 CFM		
<b>36"</b>					<b>36"x24"</b>	3260 CFM		
<b>42"</b>					<b>42"x24"</b>	3695 CFM		
<b>48"</b>					<b>48"x24"</b>	4120 CFM		
	<b>Height</b>							
<b>Width</b>	<b>28"</b>		<b>30"</b>		<b>32"</b>		<b>36"</b>	
<b>28"</b>	<b>28"x28"</b>	3010 CFM						
<b>30"</b>			<b>30"x30"</b>	3370 CFM				
<b>32"</b>					<b>32"x32"</b>	3750 CFM		
<b>36"</b>							<b>36"x36"</b>	4550 CFM
<b>48"</b>							<b>48"x36"</b>	5760 CFM
	<b>Height</b>							
<b>Width</b>	<b>42"</b>		<b>48"</b>					
<b>42"</b>	<b>42"x42"</b>	5855 CFM						
<b>48"</b>			<b>48"x48"</b>	7285 CFM				

**Note: Other sizes also available. Please call to ask us about availability.**

<b>Krueger OBD: Rectangular Opposed Blade Damper</b>					
<ul style="list-style-type: none"> <li>● Rectangular Damper                             <ul style="list-style-type: none"> <li>○ Neck-mounted</li> <li>○ Opposed Blade</li> <li>○ Attaches with "S" Clips</li> </ul> </li> <li>● Steel Construction</li> <li>● Operated By Flat-head Screwdriver</li> </ul> <p style="text-align: center; margin-top: 10px;"><b>Stock Sizes</b></p> <table border="1" style="width: 100%; border-collapse: collapse; margin-top: 5px;"> <thead> <tr style="background-color: #cccccc;"> <th style="text-align: center; padding: 2px;"><i>Neck Sizes</i></th> </tr> </thead> <tbody> <tr> <td style="text-align: center; padding: 2px;"><b>10"x10"</b></td> </tr> <tr> <td style="text-align: center; padding: 2px;"><b>22"x10"</b></td> </tr> <tr> <td style="text-align: center; padding: 2px;"><b>22"x22"</b></td> </tr> </tbody> </table>	<i>Neck Sizes</i>	<b>10"x10"</b>	<b>22"x10"</b>	<b>22"x22"</b>	
<i>Neck Sizes</i>					
<b>10"x10"</b>					
<b>22"x10"</b>					
<b>22"x22"</b>					

<b>Krueger PRN100: Round Sliding Damper</b>			
<ul style="list-style-type: none"> <li>● Radial Damper                             <ul style="list-style-type: none"> <li>○ Neck-mounted</li> <li>○ Sliding Blade / "Bowtie" style</li> </ul> </li> <li>● Steel Construction</li> <li>● Operated By Flat-head Screwdriver</li> </ul> <p style="text-align: center; margin-top: 10px;"><b>Stock Sizes</b></p> <table border="1" style="width: 100%; border-collapse: collapse; margin-top: 5px;"> <thead> <tr style="background-color: #cccccc;"> <th style="text-align: center; padding: 2px;"><i>Round Sizes</i></th> </tr> </thead> <tbody> <tr> <td style="text-align: center; padding: 2px;"><b>6"   8"   10"   12"   14"</b></td> </tr> </tbody> </table>	<i>Round Sizes</i>	<b>6"   8"   10"   12"   14"</b>	
<i>Round Sizes</i>			
<b>6"   8"   10"   12"   14"</b>			

<b>Krueger 5HCF23: Plaster Frame</b>						
<ul style="list-style-type: none"> <li>● Hard Ceiling Frame                             <ul style="list-style-type: none"> <li>○ Adapts Lay-in Diffusers for Surface Mounting</li> </ul> </li> <li>● Aluminum Construction</li> <li>● British White Finish</li> </ul> <p style="text-align: center; margin-top: 10px;"><b>Stock Sizes</b></p> <table border="1" style="width: 100%; border-collapse: collapse; margin-top: 5px;"> <thead> <tr style="background-color: #cccccc;"> <th style="text-align: center; padding: 2px;"><i>Panel Size</i></th> </tr> </thead> <tbody> <tr> <td style="text-align: center; padding: 2px;"><b>12"x12"</b></td> </tr> <tr> <td style="text-align: center; padding: 2px;"><b>24"x12"</b></td> </tr> <tr> <td style="text-align: center; padding: 2px;"><b>24"x24"</b></td> </tr> <tr> <td style="text-align: center; padding: 2px;"><b>48"x24"</b></td> </tr> </tbody> </table>	<i>Panel Size</i>	<b>12"x12"</b>	<b>24"x12"</b>	<b>24"x24"</b>	<b>48"x24"</b>	
<i>Panel Size</i>						
<b>12"x12"</b>						
<b>24"x12"</b>						
<b>24"x24"</b>						
<b>48"x24"</b>						



**Accessories**

**JPL MHP-25: Flex Duct**

- R6 Insulation
- Bagged in 25' Lengths
- Vapor Barrier: 2-play Reinforced Metalized Polyester
- End Treatments: Raw Ended
- Inner Core: Air Tight 2-ply Black Pigmented Polyester
- Maximum Positive Pressure: 6" W.G. (4"-12"), 4" W.G. (14"-22")
- Maximum Negative Pressure: 1" W.G. (4"-10"), ½" W.G. (12"-22")
- UL-listed
- GREENGUARD Gold Certification

**Accessories & Options:**

- Cable Ties

**Stock Sizes**

<i>Duct Diameter</i>
<b>6"   8"   10"   12"   14"   16"   18"</b>



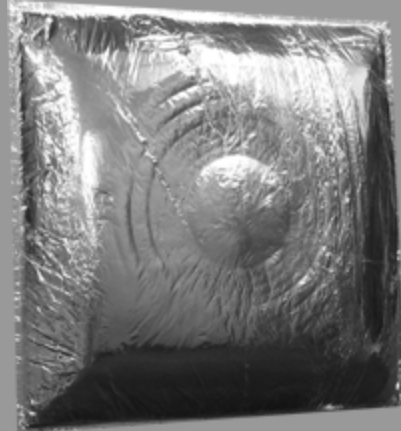
**Accessories**

**AirVector NR6MFG: Fiberglass Backpan**

- R6 Molded Fiberglass Insulated Backpan
- Pre-scored for neck sizes 6" to 16"
- 3.25" deep
- For 2'x2' Lay-in Diffusers

**Stock Sizes**

<i>Width x Height</i>
<b>22"x22"</b>



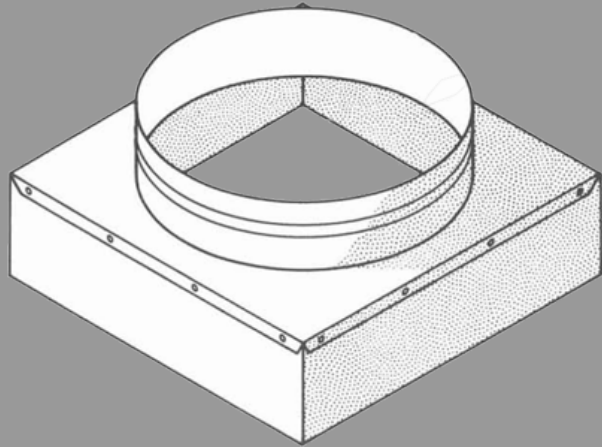


### Air-Trac SQ/RD: Square to Round Transition (SRT)

- 28 Gauge Galvanized Steel Construction
    - Riveted
  - 3" High Square with 3" Collar
- Accessories & Options:**
- 22"x22" and 22"x10" Transitions Available with Optional Black Painted Finish

#### Stock Sizes

Bottom Size	Top Size (Round)
6"x6"	4"   5"   6"
8"x8"	6"   8"
9"x9"	6"   8"
10"x10"	4"   6"   8"   10"
12"x12"	4"   6"   8"   10"   12"
14"x14"	10"   12"   14"
15"x15"	6"   8"   10"   12"   14"
18"x18"	10"   12"   14"   16"
22"x10"	6"   8"   10"   12"   14"
22"x22"	6"   8"   10"   12" 14"   16"   18"   20"

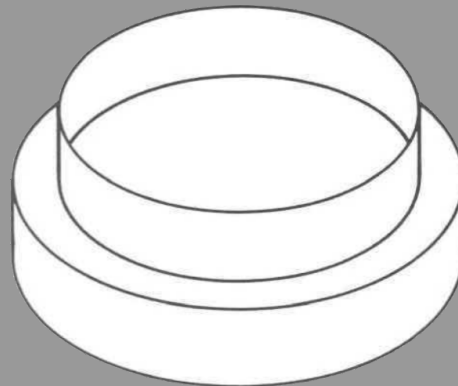


### Air-Trac RD/RD: Round to Round Transition (RRT)

- 28 Gauge Galvanized Steel Construction
  - Riveted
- 2" High Collars (Top & Bottom)

#### Stock Sizes

Bottom Size (Round)	Top Size (Round)
6"	4"
8"	6"
10"	6"   8"
12"	8"   10"
14"	10"   12"
15"	14"





# AIR-TRAC<sup>®</sup>

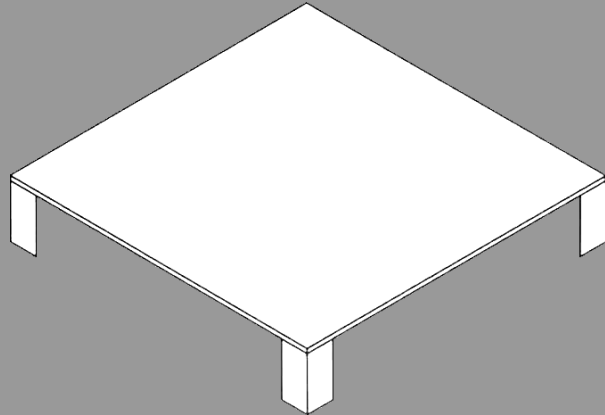
## Accessories

### Air-Trac LS: Light Shield

- Minimize direct "line of sight" through grille into ceiling plenum
- Block reflected light from ceiling fixtures
- 28 Gauge Galvanized Steel Construction
  - Painted black on bottom
- 4" High

#### Stock Sizes

Panel Size
24"x24"



# KRUEGER<sup>®</sup>

## VAV Boxes

### Krueger LMHS: Single Duct Variable Air Volume Terminal Unit

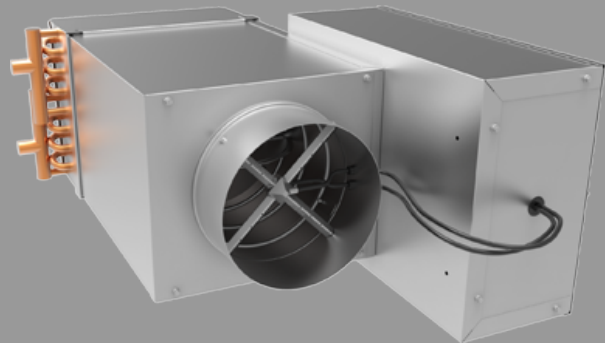
- Single Duct VAV Terminal Units
- 22 Gage Steel Construction
- Round Inlet
- Standard 1/2" Dual-Density Fiberglass Liner
- Controls Enclosure

#### Accessories & Options:

- Mounted Controls
  - Pneumatic (Stock Option)
  - Analog
  - Digital
- Thermostats
- Electric or Hot Water Heat
- Various Liners
- Sound Attenuator

#### Stock Sizes (Cooling Only)

Inlet Sizes
6"   8"   10"   12"   14"





### American Coolair CRDA: Direct-Drive Downblast Fans

- Direct-Drive
- Downblast
- Curb-Mounted
- AMCA Licensed for Sound & Air Performance
- UL Listed for Standard 705
- Non-Overloading Aluminum Wheel
- Weatherproof Spun Aluminum Housing

**Accessories & Options:**

- Bird Screen (Standard)
- Disconnect (Standard)
- Backdraft Damper
  - Motor Kit Option
- Roof Curb
- Speed Controller
  - Varies speed down to 50%
- EC Motors Available



#### Stock Models

Model	Motor HP	Maximum Performance (CFM)			Base Size	Accessories		
		0.125" w.c.	0.25" w.c.	0.50" w.c.		Damper	Roof Curb	Speed Ctrl
CRDA06C	1/13	459	<b>462</b>	375	18"x18"	12"x12"	17"x17"	2.5 Amp
CRDA10C	1/13	805	<b>752</b>	621	18"x18"	12"x12"	17"x17"	2.5 Amp
CRDA13F	1/5	1622	<b>1527</b>	1319	23"x23"	16"x16"	22"x22"	6 Amp
CRDA15H	1/3	2134	<b>2053</b>	1860	23"x23"	16"x16"	22"x22"	10 Amp

***Note: Other models also available. Please call to ask us about availability.***

### American Coolair CRBCA: Belt-Drive Downblast Fans

- Belt-Drive
- Downblast
- Curb-Mounted
- AMCA Licensed for Sound & Air Performance
- UL Listed for Standard 705
- Non-Overloading Aluminum Wheel
- Weatherproof Spun Aluminum Housing

**Accessories & Options:**

- Bird Screen (Standard)
- Disconnect Switch (Standard)
- Backdraft Damper
  - Motor Kit Option
- Roof Curb
- Variable Frequency Drives Available



#### Stock Models

Model	Motor HP	Maximum Performance (CFM)			Base Size	Accessories		
		0.125" w.c.	0.25" w.c.	0.50" w.c.		Damper	Roof Curb	
CRBCA08G	1/4	702	<b>677</b>	631	18"x18"	12"x12"	17"x17"	
CRBCA10G	1/4	934	<b>910</b>	853	18"x18"	12"x12"	17"x17"	
CRBCA13G	1/4	1765	<b>1679</b>	1491	23"x23"	16"x16"	22"x22"	
CRBCA13H	1/3	1986	<b>1911</b>	1748				
CRBCA13J	1/2	2350	<b>2250</b>	2150				
CRBCA13K	3/4	2638	<b>2586</b>	2469				
CRBCA15G	1/4	1990	<b>1897</b>	1697	23"x23"	16"x16"	22"x22"	
CRBCA15H	1/3	2180	<b>2101</b>	1913				
CRBCA15J	1/2	2463	<b>2406</b>	2252				
CRBCA15K	3/4	2820	<b>2782</b>	2469				
CRBCA15L	1	3205	<b>3174</b>	3071				
CRBCA20J	1/2	3840	<b>3660</b>	3300	30"x30"	22"x22"	28.5"x28.5"	
CRBCA20K	3/4	4409	<b>4256</b>	3942				
CRBCA20L	1	4780	<b>4642</b>	4349				
CRBCA20M	1.5	5604	<b>5490</b>	5239				
CRBCA20N	2	6167	<b>6064</b>	5841				
CRBCA24H	1/3	4424	<b>3921</b>	1596	34"x34"	26"x26"	32"x32"	
CRBCA24J	1/2	5290	<b>4836</b>	3851				
CRBCA24K	3/4	6144	<b>5738</b>	4980				
CRBCA24L	1	6868	<b>6507</b>	5812				
CRBCA24M	1.5	8103	<b>7812</b>	7188				
CRBCA24N	2	8927	<b>8672</b>	8098				
CRBCA24P	3	10142	<b>9925</b>	9427				

**Note:** Other models also available. Please call to ask us about availability.

### American Coolair UBCA: Belt-Drive Upblast Fans

- Belt-Drive, Upblast, Curb-Mounted
- AMCA Licensed for Sound & Air Performance
- UL Listed for Standard 705
- Non-Overloading Aluminum Wheel
- Weatherproof Spun Aluminum Housing

**Accessories & Options:**

- Bird Screen
- Disconnect Switch (Standard)
- Backdraft Damper
  - Motor Kit Option
- Roof Curb
- Variable Frequency Drives Available
- UL762 Rating for Grease Exhaust
- Hinge Kit



#### Stock Models

Model	Motor HP	Maximum Performance (CFM)			Base Size	Accessories		
		0.125" w.c.	0.25" w.c.	0.50" w.c.		Damper	Roof Curb	
UBCA12G	1/4	1576	1140	<b>1074</b>	26"x26"	18"x18"	23 <sup>3</sup> / <sub>4</sub> "x23 <sup>3</sup> / <sub>4</sub> "	
UBCA12H	1/3	1742	1674	<b>1542</b>				
UBCA12J	1/2	1963	1901	<b>1783</b>				
UBCA12K	3/4	2290	2236	<b>2132</b>				
UBCA15H	1/3	2197	2077	<b>1835</b>	26"x26"	18"x18"	23 <sup>3</sup> / <sub>4</sub> "x23 <sup>3</sup> / <sub>4</sub> "	
UBCA15J	1/2	2386	2288	<b>2045</b>				
UBCA15K	3/4	2948	2881	<b>2679</b>				
UBCA15L	1	3225	3166	<b>3004</b>				
UBCA18J	1/2	3296	3067	<b>2725</b>	30"x30"	22"x22"	28 <sup>1</sup> / <sub>2</sub> "x28 <sup>1</sup> / <sub>2</sub> "	
UBCA18K	3/4	3723	3509	<b>3200</b>				
UBCA18L	1	4283	4109	<b>3792</b>				
UBCA18M	1.5	4910	4774	<b>4452</b>				
UBCA20N	2	5465	5351	<b>5054</b>	34"x34"	26"x26"	32"x32"	
UBCA20J	1/2	3812	3580	<b>3185</b>				
UBCA20K	3/4	4397	4189	<b>3383</b>				
UBCA20L	1	4970	4785	<b>4443</b>				
UBCA20M	1.5	5620	5459	<b>5133</b>	34"x34"	26"x26"	32"x32"	
UBCA20N	2	6384	6243	<b>5950</b>				
UBCA24J	1/2	4755	4449	<b>3584</b>				
UBCA24K	3/4	5575	5311	<b>4651</b>				
UBCA24L	1	6132	5895	<b>5348</b>	34"x34"	26"x26"	32"x32"	
UBCA24M	1.5	7012	6810	<b>6383</b>				
UBCA24N	2	7661	7481	<b>7089</b>				
UBCA24P	3	8959	8810	<b>8480</b>				

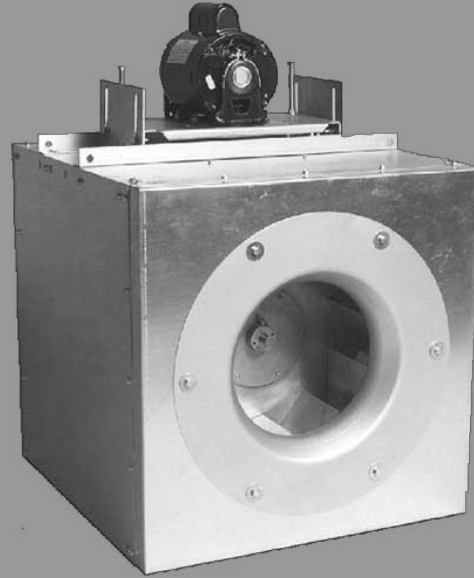
**Note: Other models also available. Please call to ask us about availability.**

### ACA SQDA/SQBA: Direct-Drive & Belt-Drive Square Inline Fans

- Direct-Drive & Belt-Drive
- Square Inline
- AMCA Licensed for Sound & Air Performance
- UL Listed for Standard 705
- Non-Overloading Aluminum Wheel
- Weatherproof Spun Aluminum Housing

**Accessories & Options:**

- Drive Guard (Standard for SQBA)
- Disconnect (Standard for SQDA)
- Backdraft Damper
  - Motor Kit Option
- Vibration Isolators (Rubber or Spring)
- Variable Frequency Drives Available



#### Stock Models

Model	Motor HP	Maximum Performance (CFM)			Inlet/Outlet Size	Accessories		
		0.125" w.c.	0.25" w.c.	0.50" w.c.		Damper	Speed Ctrl	
SQDA10E	1/10	669	618	542	14"x14"	14"x14"	6 Amp	
SQBA10G	1/4	932	901	821	14"x14"	14"x14"	-	
SQBA10H	1/3	1047	1020	957				
SQBA12G	1/4	1326	1265	1115	18"x18"	18"x18"	-	
SQBA12H	1/3	1494	1436	1307				
SQBA12J	1/2	1717	1663	1560				
SQBA12K	3/4	1993	1942	1857	23"x23"	22"x22"	-	
SQBA15H	1/3	2048	1949	1719				
SQBA15J	1/2	2421	2332	2157				
SQBA15K	3/4	2791	2712	2563				
SQBA15L	1	3067	2994	2856	28½"x28½"	28"x28"	-	
SQBA18K	3/4	3646	3535	3303				
SQBA18L	1	4044	3943	3740				
SQBA18M	1.5	4641	4552	4377	30½"x30½"	30"x30"	-	
SQBA20L	1	4786	4620	4302				
SQBA20M	1.5	5621	5478	5200	36½"x36½"	36"x36"	-	
SQBA24M	1.5	7416	7146	6680				
SQBA24N	2	8207	7957	7511				

**Note:** Other models also available. Please call to ask us about availability.

### American Coolair CWDA: Direct-Drive Wall Fans

- Direct-Drive
- Wall-Mounted
- AMCA Licensed for Sound & Air Performance
- UL Listed for Standard 705
- Force Ventilated Motor Compartment
- Non-Overloading Aluminum Wheel
- Weatherproof Spun Aluminum Housing

**Accessories & Options:**

- Bird Screen (Standard)
- Disconnect (Standard)
- Backdraft Damper
  - Motor Kit Option
- Wall Flange
- Speed Controller
  - Varies speed down to 50%
- EC Motors Available



**Stock Models**

Model	Motor HP	Maximum Performance (CFM)			Wall Opening	Accessories		
		0.125" w.c.	0.25" w.c.	0.50" w.c.		Damper	Wall Flange	Speed Ctrl
CWDA10C	1/13	783	<b>737</b>	625	10 <sup>3</sup> / <sub>4</sub> "x10 <sup>3</sup> / <sub>4</sub> "	12"x12"	WF10	2.5 Amp
CWDA13F	1/5	1463	<b>1372</b>	1182	15 <sup>3</sup> / <sub>4</sub> "x15 <sup>3</sup> / <sub>4</sub> "	16"x16"	WF13	6 Amp
CWDA15H	1/3	1952	<b>1862</b>	1636	15 <sup>3</sup> / <sub>4</sub> "x15 <sup>3</sup> / <sub>4</sub> "	16"x16"	WF15	10 Amp

**Note: Other models also available. Please call to ask us about availability.**

### PennBarry Domex: Direct-Drive & Belt-Drive Downblast Fans

- Direct-Drive & Belt-Drive
- Downblast
- Curb-Mounted
- AMCA Licensed for Sound & Air Performance
- UL Listed for Standard 705
- Non-Overloading Aluminum Wheel
- Weatherproof Spun Aluminum Housing

**Accessories & Options:**

- Bird Screen (Standard)
- Disconnect (Standard)
- Backdraft Damper
  - Motor Kit Option
- Roof Curb
- Speed Controller (Direct-Drive Only)
  - Varies speed down to 50%
- EC Motors Available



#### Stock Models

Model	Motor HP	Maximum Performance (CFM)			Base Size	Accessories		
		0.125" w.c.	0.25" w.c.	0.50" w.c.		Damper	Roof Curb	Speed Ctrl
DX10SR	1/12	501	<b>447</b>	338	18.5"x18.5"	12"x12"	17"x17"	2.5 Amp
DX11VSR	1/6	659	<b>579</b>	432	18.5"x18.5"	12"x12"	17"x17"	2.5 Amp
DX13VSR	1/6	987	<b>923</b>	737	18.5"x18.5"	12"x12"	17"x17"	2.5 Amp
DX13Q	1/4	1226	<b>1170</b>	1053				2.5 Amp
DX16VSR	1/3	2176	<b>2014</b>	1685	20.5"x20.5"	16"x16"	19"x19"	6 Amp
DX16Q1	1/2	2576	<b>2460</b>	2228				10 Amp
DX16Q2	3/4	3015	<b>2825</b>	2665				15 Amp
DX11QGP	1/3 (ECM)	921	<b>850</b>	685	18.5"x18.5"	12"x12"	17"x17"	Integral
DX16RGP	1/3 (ECM)	2176	<b>2013</b>	1689	20.5"x20.5"	16"x16"	19"x19"	Integral
DX16Q1GP	1/2 (ECM)	2579	<b>2464</b>	2228				Integral
DX06B	1/4	635	<b>540</b>	310	18.5"x18.5"	12"x12"	17"x17"	-
DX08B	1/4	940	<b>860</b>	865	18.5"x18.5"	12"x12"	17"x17"	-
DX11B	1/4	1635	<b>1460</b>	1020	20.5"x20.5"	16"x16"	19"x19"	-
DX14B	1/4	2200	<b>1920</b>	1295	24 <sup>3</sup> / <sub>4</sub> "x24 <sup>3</sup> / <sub>4</sub> "	24"x24"	23 <sup>3</sup> / <sub>4</sub> "x23 <sup>3</sup> / <sub>4</sub> "	-
	1/2	3050	<b>2850</b>	2410				
	3/4	3575	<b>3400</b>	3035				
DX18B	1/2	3860	<b>3540</b>	2800	28.5"x28.5"	20"x20"	27"x27"	-
	3/4	4550	<b>4265</b>	3685				
	1	5085	<b>4825</b>	4315				
	1.5	5925	<b>5690</b>	5245				
DX24B	3/4	5855	<b>5375</b>	4355	33.5"x33.5"	24"x24"	32"x32"	-
	1	6555	<b>6140</b>	5225				
	1.5	7645	<b>7295</b>	6520				
	2	8495	<b>8190</b>	7505				

### PennBarry Fumex: Direct-Drive & Belt-Drive Upblast Fans

- Direct-Drive & Belt-Drive
- Upblast
- Curb-Mounted
- AMCA Licensed for Sound & Air Performance
- UL Listed for Standard 705 (UL762 Available)
- Non-Overloading Aluminum Wheel
- Weatherproof Spun Aluminum Housing

**Accessories & Options:**

- Disconnect (Standard)
- Backdraft Damper
  - Motor Kit Option
- Roof Curb
- Speed Controller (Direct-Drive Only)
  - Varies speed down to 50%
- EC Motors Available



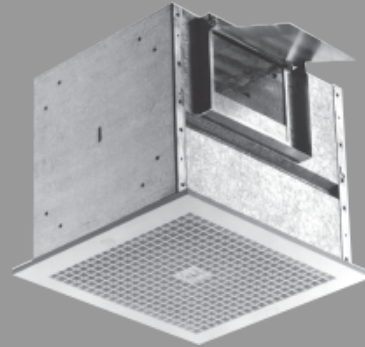
#### Stock Models

Model	Motor HP	Maximum Performance (CFM)			Base Size	Accessories		
		0.125" w.c.	0.25" w.c.	0.50" w.c.		Damper	Roof Curb	Speed Ctrl
FX10R	1/12	500	441	327	18½"x18½"	16"x16"	17"x17"	2.5 Amp
FX11Q	1/5	961	884	721	18½"x18½"	16"x16"	17"x17"	6 Amp
FX13Q	1/4	1196	1143	1035				6 Amp
FX16R	1/2	1992	1854	1557				6 Amp
FX08B	1/4	695	640	505	24¾"x24¾"	16"x16"	23¾"x23¾"	-
	1/2	950	910	820				
FX10B	1/4	1335	1220	985	24¾"x24¾"	16"x16"	23¾"x23¾"	-
	1/2	1825	1740	1565				
FX13B	1/4	1760	1585	1155	24¾"x24¾"	16"x16"	23¾"x23¾"	-
	1/3	1970	1815	1465				
	1/2	-	2285	2020				
FX14B	1/4	-	1860	1200	24¾"x24¾"	16"x16"	23¾"x23¾"	-
	1/3	-	2155	1625				
	1/2	-	2760	2345				
	3/4	-	3300	2940				
	1	-	3715	3395				
FX18B	1.5	4480	4355	4085	28½"x28½"	20"x20"	27"x27"	-
	1/2	-	3385	2735				
	1	-	4620	4130				
	1.5	-	5440	5020				
FX24B	2	-	6085	5705	33½"x33½"	25"x25"	32"x32"	-
	1.5	-	6950	6295				
	2	-	7790	7210				

**Note: Other models also available. Please call to ask us about availability.**

### PennBarry Zephyr: Ceiling Exhaust Fans

- Ceiling Exhaust Fans
- **Accessories & Options:**
  - Speed Controller
    - Varies Speed Down to 50%
  - Inline Adapter
  - Wall Cap
  - Roof Cap



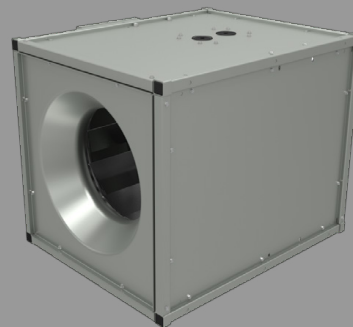
#### Stock Models

Model	Maximum Performance (CFM)			Power (Watts)	Duct Connection	Accessories		
	0.125" w.c.	0.25" w.c.	0.50" w.c.			Speed Controller	Inline Adapter	Other
<b>ZT</b>	<b>88</b>	85	49	48	10"x3¼"	2.5 Amp	-	6" Adapter
<b>Z5H</b>	<b>162</b>	137	22	79	10"x3¼"	2.5 Amp	20722	6" Adapter
<b>ZJ1</b>	<b>171</b>	166	151	125	10"x3¼"	2.5 Amp	-	6" Adapter
<b>Z6H</b>	<b>197</b>	166	-	108	10"x3¼"	2.5 Amp	20722	6" Adapter
<b>Z8H</b>	<b>403</b>	385	348	132	8"x6"	2.5 Amp	20723	
<b>Z10H</b>	<b>693</b>	665	613	390	8"x6"	6 Amp	20724	
<b>Z121S</b>	<b>1072</b>	1025	839	370	22"x6"	6 Amp	20725	
<b>Z12H</b>	<b>1514</b>	1465	1363	851	22"x6"	10 Amp	20725	

**Note: Other models also available. Please call to ask us about availability.**

### PennBarry Centrex: Inline Exhaust Fans

- Direct-Drive Inline Exhaust Fans with EC motors
- Integral Speed Controllers
- Disconnect Switches
- Spring Vibration Isolators



#### Stock Models

Model	Maximum Performance (CFM)			Motor HP	Duct Inlet/Outlet	Accessories		
	0.125" w.c.	0.25" w.c.	0.50" w.c.			Speed Controller	Disconnect Switch	Vibration Isolators
<b>SX085RCGP</b>	641	<b>582</b>	435	1/6	16"x16"	Integral	Yes	Spring
<b>SX115RCGP</b>	1919	<b>1781</b>	1455	1/2	22"x22"	Integral	Yes	Spring

**Note: Other models also available. Please call to ask us about availability.**

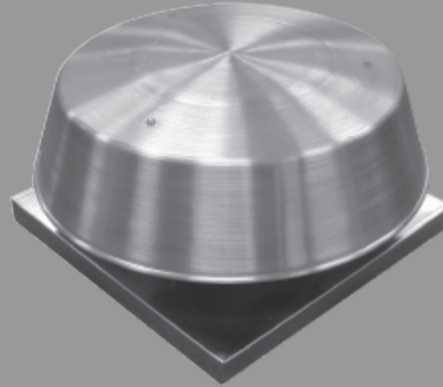


### PennBarry WCC: Gravity Ventilators

- Curb-Mounted
- Weatherproof Spun Aluminum Housing

**Accessories & Options:**

- Bird Screen (Standard)
- Backdraft Damper
  - Motor Kit Option
- Counterbalanced Damper
- Roof Curb



#### Stock Models

Model	Max. Performance		Throat Diameter	Overall Diameter	Base Size	Accessories		
	Relief @ 0.125" w.c.	Intake at 500 FPM				Damper	Roof Curb	
<b>WCC10</b>	<b>664 CFM</b>	785 CFM	11"	21"	18.5"x18.5"	12"x12"	17"x17"	
<b>WCC12</b>	<b>1102 CFM</b>	1115 CFM	13"	25"	20.5"x20.5"	16"x16"	19"x19"	
<b>WCC16</b>	<b>1668 CFM</b>	1495 CFM	17"	30"	24 <sup>3</sup> / <sub>4</sub> "x24 <sup>3</sup> / <sub>4</sub> "	16"x16"	23 <sup>3</sup> / <sub>4</sub> "x23 <sup>3</sup> / <sub>4</sub> "	
<b>WCC18</b>	<b>2055 CFM</b>	1625 CFM	19"	32"	28.5"x28.5"	20"x20"	27"x27"	
<b>WCC20</b>	<b>2519 CFM</b>	2275 CFM	21"	37"	28.5"x28.5"	20"x20"	27"x27"	
<b>WCC24</b>	<b>3288 CFM</b>	3435 CFM	25"	45"	33.5"x33.5"	24"x24"	32"x32"	

***Note: Other models also available. Please call to ask us about availability.***

### Broan: Ceiling Exhaust Fans

- Ceiling Exhaust Fans
- **Accessories & Options:**
  - Speed Controller
    - Varies Speed Down to 50%
  - Inline Adapter
  - Wall Cap
  - Roof Cap
  - Light
  - Surface Shield Violet Light
    - Fights growth of bacterial, mold, fungi, etc.
- Energy Star Rating



#### Stock Models

Model	Maximum Performance (CFM)			Sound at Bolded Perf.	Duct Connection	Accessories		
	0.125" w.c.	0.25" w.c.	0.50" w.c.			Speed Controller	Inline Adapter	Other
L100	109	93	65	0.9 Sones	6" Round	2.5 Amp	961L	-
L150	157	141	124	1.5 Sones	6" Round	2.5 Amp	961L	-
L200	210	196	177	1.7 Sones	8" Round	2.5 Amp	981L	-
L250	259	250	233	2.2 Sones	8" Round	2.5 Amp	981L	-
L300	308	303	287	2.9 Sones	8" Round	2.5 Amp	981L	-
L400	434	388	299	2.3 Sones	4.5"x18.5"	2.5 Amp	982L	-
L500	514	491	434	3.3 Sones	4.5"x18.5"	2.5 Amp	982L	-
L700	701	667	607	4.7 Sones	4.5"x18.5"	6 Amp	982L	-
AE50110DC	50 - 80 - 110 @ 0.1"	36 - 71 - 105	0 - 35 - 62	0.9 Sones	4" Round	-	-	3 Selectable Speed Settings
670	56 @ 0.1"	46	32	3.5 Sones	3" Round	2.5 Amp	-	-
671	70 @ 0.1"	-	-	6.0 Sones	3" Round	2.5 Amp	-	-
678	50 @ 0.1"	29	-	2.5 Sones	4" Round	2.5 Amp	-	Light
A110	110 @ 0.1"	102	-	3.0 Sones	4" Round	2.5 Amp	-	-
688	50 @ 0.1"	-	-	4.0 Sones	3" Round	2.5 Amp	-	-
AE80B	78 @ 0.1"	58	-	1.2 Sones	4" Round	2.5 Amp	-	Energy Star
XB80	80 @ 0.1"	79	53	<0.3 Sones	6" Round	-	-	Energy Star
XB110	110 @ 0.1"	110	42	<0.3 Sones	6" Round	-	-	Energy Star

**Note: Other models also available. Please call to ask us about availability.**

**Canarm VK: Direct-Drive Inline Fan for High Static Pressure**

- Direct-Drive Inline Fan
- Backward Curved Centrifugal Impeller Wheel
- 3-Prong Power Cord
- Plastic Construction

**Accessories & Options:**

- Mounting Bracket (Standard)


**Stock Models**

Model	Duct Diameter	Maximum Performance						
		0.125" w.c.	0.25" w.c.	0.50" w.c.	0.75" w.c.	1.00" w.c.	1.25" w.c.	1.50" w.c.
VK100	4"	155	147	134	120	104	87	67

***Note: Other models also available. Please call to ask us about availability.***

**Canarm VKM: Direct-Drive Inline Fan for High Static Pressure**

- Direct-Drive Inline Fan
- Backward Curved Centrifugal Impeller Wheel
- 3-Prong Power Cord
- Metal Construction

**Accessories & Options:**

- Mounting Plate (Standard)


**Stock Models**

Model	Duct Diameter	Maximum Performance						
		0.125" w.c.	0.25" w.c.	0.50" w.c.	0.75" w.c.	1.00" w.c.	1.25" w.c.	1.50" w.c.
VKM150	6"	292	<b>265</b>	214	172	139	107	67
VKM200	8"	502	<b>464</b>	391	320	265	222	183
VKM250	10"	638	<b>599</b>	479	408	340	292	248
VKM305	12"	756	<b>727</b>	669	611	542	480	428

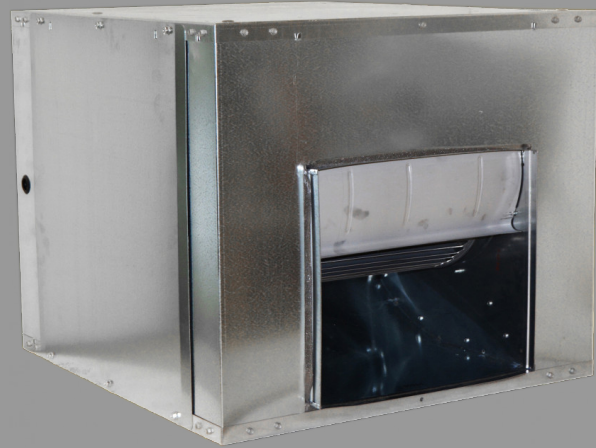
***Note: Other models also available. Please call to ask us about availability.***

**Canarm IDB: Belt-Drive Square Inline Duct Blowers Fans**

- Belt-Drive
- Square Inline
- AMCA Licensed for Sound & Air Performance
- UL Listed for Standard 705
- Forward Curved Wheel
- Galvanized Steel Construction

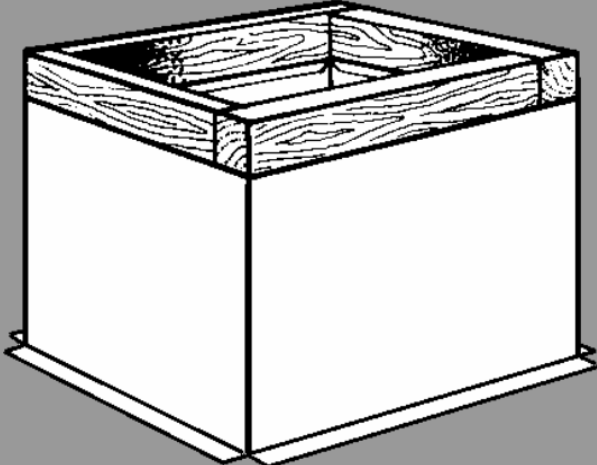
**Accessories & Options:**


- Disconnect Switch
- Backdraft Damper
  - Motor Kit Option
- Vibration Isolators (Rubber or Spring)
- Variable Frequency Drives Available


**Stock Models**

Model	Motor HP	Maximum Performance			Dimensions		
		0.125" w.c.	0.25" w.c.	0.50" w.c.	Inlet	Outlet	
IDB07	1/3	1116	1045	<b>998</b>	15-7/8" x 13-3/8"	8-1/4" x 9-3/16"	
	1/2	1290	1240	<b>1178</b>			
	3/4	1490	1440	<b>1400</b>			
IDB09	1/3	1500	1460	<b>1350</b>	19" x 16"	10-1/4" x 11-13/16"	
	1/2	1750	1710	<b>1615</b>			
	3/4	2000	1965	<b>1400</b>			
IDB10	1/3	1775	1710	<b>1550</b>	20-1/4" x 18"	11-3/8" x 13-1/8"	
	1/2	2070	1995	<b>1880</b>			
	3/4	2395	2315	<b>2210</b>			
IDB12	1/3	2250	2071	<b>1710</b>	25" x 21"	13-7/16" x 15-5/8"	
	1/2	2640	2470	<b>2166</b>			
	3/4	3040	2915	<b>2640</b>			
	1	3370	3260	<b>3010</b>			
	1.5	3875	3790	<b>3570</b>			
IDB15	1/3	2800	2630	<b>1840</b>	30-1/2" x 25"	15-7/8" x 18-5/8"	
	1/2	3250	3135	<b>2420</b>			
	3/4	3740	3660	<b>3315</b>			
	1	4130	4060	<b>3820</b>			
	1.5	4500	4300	<b>4000</b>			
	2	5300	5000	<b>4800</b>			
	3	6300	6000	<b>5800</b>			

**Note: Other models also available. Please call to ask us about availability.**

<b>Pate pc-2: Roof Curb</b>		
<ul style="list-style-type: none"> <li>● Heavy Gauge Galvanized Steel Construction                             <ul style="list-style-type: none"> <li>○ Riveted</li> </ul> </li> <li>● 1.5" Thick Rigid Fiberglass Insulation</li> <li>● Pressure Treated Wood Nailers</li> </ul>		
<b>Stock Sizes</b>		
<i>Outside Dim.</i>	<i>Inside Dim.</i>	<i>Height</i>
<b>15"x15"</b>	<b>12"x12"</b>	<b>12"</b>
<b>17"x17"</b>	<b>14"x14"</b>	<b>12"   18"</b>
<b>19"x19"</b>	<b>16"x16"</b>	<b>12"   18"</b>
<b>22"x22"</b>	<b>19"x19"</b>	<b>12"   18"</b>
<b>23<sup>3</sup>/<sub>4</sub>"x23<sup>3</sup>/<sub>4</sub>"</b>	<b>20<sup>3</sup>/<sub>4</sub>"x20<sup>3</sup>/<sub>4</sub>"</b>	<b>12"   18"</b>
<b>27"x27"</b>	<b>24"x24"</b>	<b>12"   18"</b>
<b>28<sup>1</sup>/<sub>2</sub>"x28<sup>1</sup>/<sub>2</sub>"</b>	<b>25<sup>1</sup>/<sub>2</sub>"x25<sup>1</sup>/<sub>2</sub>"</b>	<b>12"</b>
<b>32"x32"</b>	<b>29"x29"</b>	<b>12"</b>
<b>35"x35"</b>	<b>32"x32"</b>	<b>12"</b>

<b>ACP 411/611/413: Backdraft Damper</b>		
<ul style="list-style-type: none"> <li>● 28 Gauge Galvanized Steel Construction                             <ul style="list-style-type: none"> <li>○ Riveted</li> </ul> </li> <li>● 3" High Square with 3" Collar</li> </ul> <p><b>Accessories &amp; Options:</b></p> <ul style="list-style-type: none"> <li>● 611MTR Motor Kit (24V or 120/240V)</li> </ul>		
<b>Stock Sizes</b>		
<i>Model 411 (Exhaust/Relief)</i>		
<b>10"x10"</b>	<b>12"x12"</b>	<b>14"x14"</b>
<b>15"x15"</b>	<b>16"x16"</b>	<b>18"x18"</b>
<b>20"x20"</b>	<b>22"x22"</b>	<b>24"x24"</b>
<b>26"x26"</b>	<b>28"x28"</b>	<b>30"x30"</b>
<i>Model 611 (Exhaust/Relief)</i>		
<b>32"x32"</b>	<b>36"x36"</b>	
<i>Model 413 (Supply/Intake)</i>		
<b>12"x12"</b>	<b>16"x16"</b>	<b>20"x20"</b>
<b>25"x25"</b>		

**Dayus DAL2-FF: Louvers**

- Aluminum Construction
- Storm-proof Louvers
- 1" Flange
- Mill Finish

**Stock Sizes**

<i>Width x Height</i>		
<b>8"x8"</b>	<b>10"x10"</b>	<b>12"x12"</b>
<b>14"x14"</b>	<b>16"x16"</b>	<b>18"x18"</b>
<b>20"x20"</b>	<b>22"x22"</b>	<b>24"x24"</b>
<b>26"x26"</b>	<b>28"x28"</b>	



### AireTechnologies 75AH: Rectangular Fire Dampers

- Rectangular Static Fire Dampers
- Type A
  - Curtain Blades in the Airstream
- 1.5 Hour Rated
  - For up to 2 hour fire walls
- Springs
  - Horizontal or Vertical Mounting
- 165°F Fusible Links



#### Stock Sizes (Width x Height)

Width	Height								
	6"	8"	10"	12"	14"	16"	18"	20"	24"
6"	6"x6"								
8"	8"x6"	8"x8"							
10"	10"x6"	10"x8"	10"x10"						
12"	12"x6"	12"x8"	12"x10"	12"x12"					
14"	14"x6"	14"x8"	14"x10"	14"x12"	14"x14"				
16"	16"x6"	16"x8"	16"x10"	16"x12"	16"x14"	16"x16"			
18"	18"x6"	18"x8"	18"x10"	18"x12"	18"x14"	18"x16"	18"x18"		
20"	20"x6"	20"x8"	20"x10"	20"x12"	20"x14"	20"x16"		20"x20"	
22"	22"x6"	22"x8"	22"x10"	22"x12"	22"x14"	22"x16"			
24"	24"x6"	24"x8"	24"x10"	24"x12"	24"x14"	24"x16"			24"x24"
26"				26"x12"					
28"				28"x12"					
30"						30"x16"			
36"						36"x16"			

***Note: Other sizes also available. Please call to ask us about availability.***

**AireTechnologies 75CH: Round Fire Dampers**

- Round Static Fire Dampers
- Type C
  - Curtain Blades in the Airstream
- 1.5 Hour Rated
  - For up to 2 hour fire walls
- Springs
  - Horizontal or Vertical Mounting
- 165°F Fusible Links

**Stock Sizes**

<i>Diameter</i>
<b>6"   8"   10"   12"   14"   16"</b>



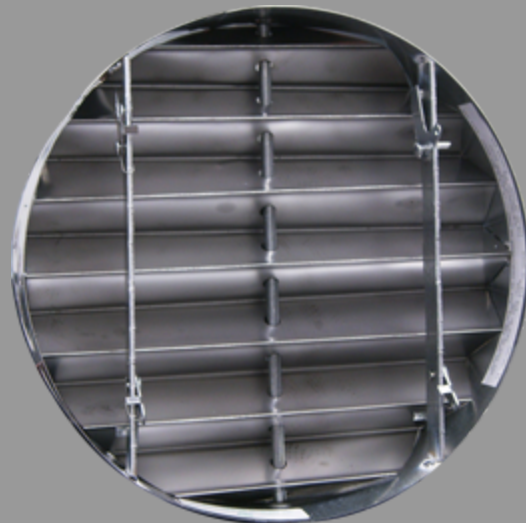
***Note: Other sizes also available. Please call to ask us about availability.***

**Arrow United R17: True Round Fire Dampers**

- True Round Dynamic Fire Dampers
- Curtain Blades
- 1.5 Hour Rated
  - For up to 2 hour fire walls
- Springs
  - Horizontal or Vertical Mounting
- 165°F Fusible Links

**Stock Sizes**

<i>Diameter</i>
<b>4"   6"   8"   10"   12"</b>



***Note: Other sizes also available. Please call to ask us about availability.***





## Access Doors

### **Kees ADC: Rectangular Access Doors**

- Square Framed Access Doors
- 22 Gauge Galvanized Steel Door Frame
- 24 Gauge Galvanized Steel Door Panels
- Fiberglass Insulation
- Foam Gasket
- Cam Latch & Striker

#### **Stock Sizes**

Width x Height		
6"x6"	8"x8"	10"x10"
12"x12"	14"x14"	16"x16"
18"x18"	20"x20"	24"x24"



**Note:** Other sizes also available. Please call to ask us about availability.



## Access Doors

### **AireTechnologies DRU: Access Doors for Spiral Ductwork**


- Sandwich Access Doors for Spiral Ductwork
- 22 Gauge Galvanized Steel Construction
- Uninsulated
- Open and Close Without Tools


#### **Stock Sizes**

Model	Width X Height	Diameter
DRU846GA	8"x4"	5"-6"
DRU849GA		7"-9"
DRU8411GA		10"-11"
DRU8414GA		12"-14"
DRU12811GA	12"x8"	10"-11"
DRU12814GA		12"-14"
DRU12816GA		15"-16"
DRU12818GA		17"-18"



**Note:** Other sizes also available. Please call to ask us about availability.

<b>AireTechnologies CTB25: Thermal Blankets</b>			
<ul style="list-style-type: none"> <li>Ceramic Fiber Thermal Blanket</li> </ul> <p style="text-align: center;"><b>Stock Sizes</b></p> <table border="1" style="margin-left: auto; margin-right: auto; border-collapse: collapse;"> <tr> <td style="text-align: center; padding: 2px;"><i>Width x Height</i></td> </tr> <tr> <td style="text-align: center; padding: 2px;"><b>24"x24"</b></td> </tr> </table>	<i>Width x Height</i>	<b>24"x24"</b>	
<i>Width x Height</i>			
<b>24"x24"</b>			

<b>Modine HD: Gas-Fired Unit Heater</b>					
<ul style="list-style-type: none"> <li>Natural Gas-Fired Unit Heaters</li> <li>Power Vented</li> </ul> <p><b><u>Accessories &amp; Options:</u></b></p> <ul style="list-style-type: none"> <li>Thermostat</li> </ul>					
Stock Models					
Model	Motor HP	BTU/hr		Entering CFM	
		Input	Output		
HD30	1/15	30,000	24,000	505	
HD45	1/15	45,000	36,000	720	
HD60	1/12	60,000	48,000	990	
HD75	1/12	100,000	80,000	1160	
HD125	1/8	125,000	100,000	1980	

***Note: Other models also available. Please call to ask us about availability.***

**Brands Lelund Represents and/or Distributes:**



PENN BARRY™

Fans



**KRUEGER**  
Excellence in Air Distribution

Grilles, Registers, Diffusers,  
VAV



AMERICAN **Coolair**®  
**ILG**  
INDUSTRIES

Fans



**ABSOLUTAIRE**

Make-Up Air Units



AirConcepts Inc.  
AIR DISTRIBUTION PRODUCTS

Diffusers



**ACP**  
AIR CONDITIONING PRODUCTS CO.

Backdraft Dampers




**AIR MANAGERS**

Grilles



**AIRIUS**®

Destratification Fans



**AIR-TRAC**®

Square-to-Round Transitions



**at**  
AireTechnologies, Inc.  
an HMI company

Fire Dampers & Access Doors



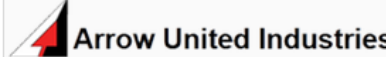
AMERICAN LOUVER COMPANY®  
**PLASTICADE**®

Plastic Diffusers



**AQC** DUST COLLECTING SYSTEMS

Dust Collection




**Arrow United Industries**

Louvers & Dampers



**BERKO**®


Electric Heaters



**BERNER**®  
AIR CURTAINS

Air Curtains

**Brands Lelund Represents and/or Distributes:**




**BROAN**<sup>®</sup>

Ceiling Exhaust Fans



**CANARM**<sup>®</sup>

Fans & Ceiling Fans



**COMMERCIAL ACOUSTICS**

Sound Attenuators



**DRG**  
Dayus Register & Grille

Registers & Grilles



**DELTA**  
**BLOWERS**

Fans



**ENTRE/MATIC**

HVLS Fans



**Fantech**

Fans



**FLEXABOOT**<sup>®</sup>

Return Grille Sound Boot



**HART COOLEY**<sup>®</sup>

Flex Ductwork




**iac acoustics**  
making the world a quieter place

Duct Silencers



**Johnson Controls**

Control Dampers, VFD's




**KEES**

Hoods & Access Doors




**LaundryFab**

Laundry Exhaust Systems



**Larkin**<sup>®</sup>

Kitchen Hoods & Fans



**LEADING EDGE**<sup>®</sup>  
A Marley Engineered Products Brand

Ceiling Fans

**Brands Lelund Represents and/or Distributes:**



MacroAir  
engineers of air™

HVLS Fans



GAS DETECTION  
Macurco

Gas Detectors



Markel®  
Products Company

Electric Heaters



MODINE  
Always Innovating. Always Improving.

Heaters, Make-Up Air Units



NATIONAL SYSTEMS  
OF GARAGE VENTILATION

Garage Ventilation




neptronic®

Electric Duct Heaters



OUELLET

Electric Heaters



the pate company

Roof Curbs



přihoda®

Fabric Ductwork



QMARK®  
A Division of Marley Engineered Products

Electric Heaters



Raywall  
Comfort Conditioning Products

Electric Heaters



RELIABLE

Grilles & Diffusers



RELIABLE  
ARCHITECTURAL PRODUCTS

Louvers



SAFE AIR  
DOWCO

Louvers & Dampers



SMITH  
FILTER CORPORATION

Filters

**Brands Lelund Represents and/or Distributes:**

The logo for SupremeFan features the word "Supreme" in a purple serif font and "Fan" in a purple sans-serif font, both contained within a white rectangular box with a purple border.

Kitchen Ventilation Systems



VAV Diffusers



TPI CORPORATION

Heaters & Circulating Fans



Louvers & Dampers



Fume Extraction



Louvers & Dampers



Electric Duct Heaters

**Lelund Enterprises, Inc.**  
1040 N. Main St.  
Lombard, IL  
630-627-9886

**Hours:**  
Mon-Thurs - 7am - 5pm  
Friday - 7am - 4pm

